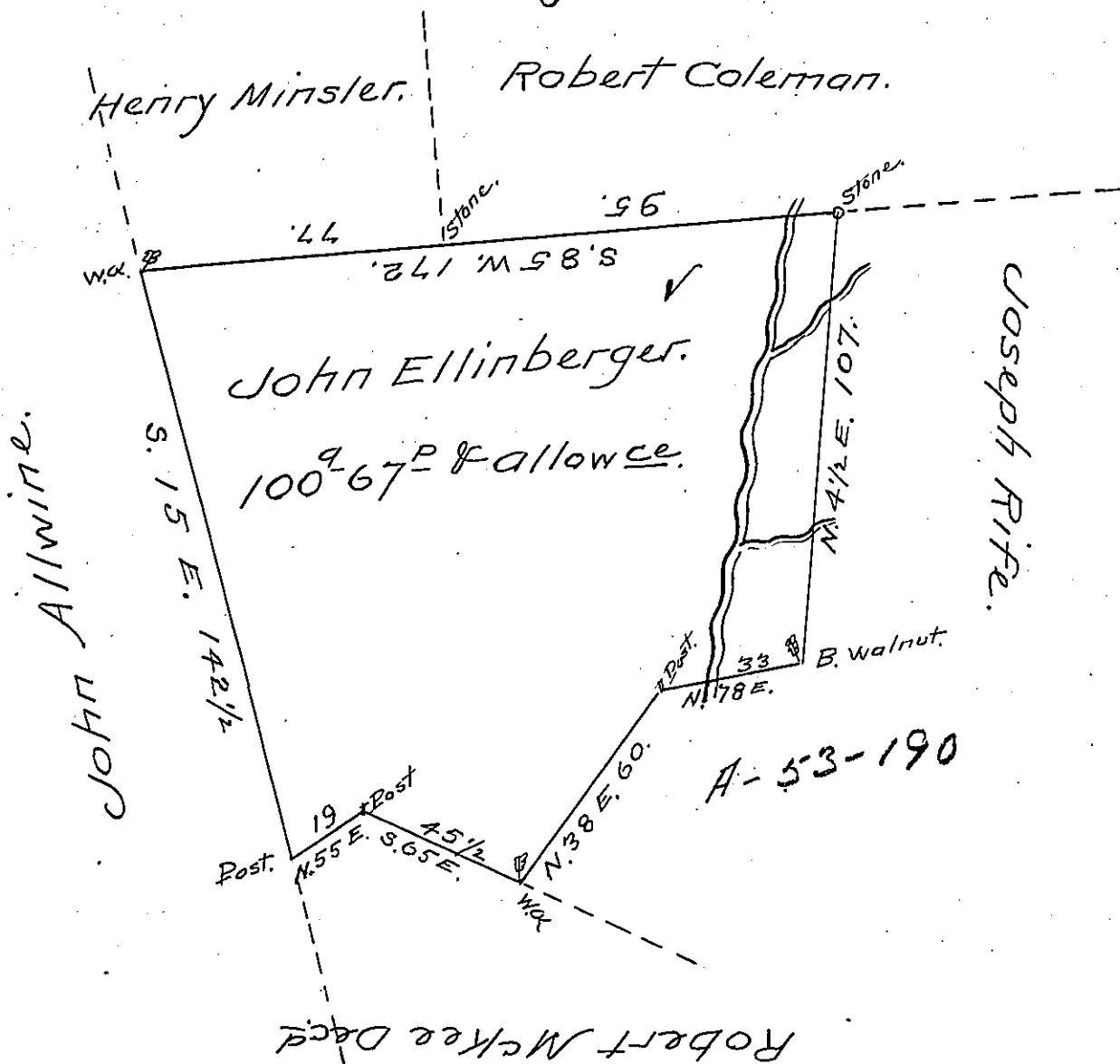


C 218-114-117



The above is a Draught of a Tract of Land  
 Containing 100 acres and 67 perches and the usual  
 allowance of six  $\frac{1}{2}$  Ct. situ (obl.) in Derry Township  
 Dauphin County. It being part of a Tract of Land  
 formerly Surveyed for James Hall in pursuance of  
 a Warrant Granted said Hall Dated the 13<sup>th</sup> day  
 of October 1743 and now Resurveyed the 1<sup>st</sup> day  
 of September 1809

John McKee D.S.

Andrew Porter Esq<sup>r</sup> }  
 Surveyor General }

IN TESTIMONY that the above is a copy of the original remaining on file in  
 the Department of Internal Affairs of Pennsylvania, made  
 conformably to an Act of Assembly approved the 16th day of  
 February, 1833, I have hereunto set my Hand and caused  
 the Seal of said Department to be affixed at Harrisburg,  
 this Thirtieth day of March 1905.

*George D. Perry*  
 Secretary of Internal Affairs.